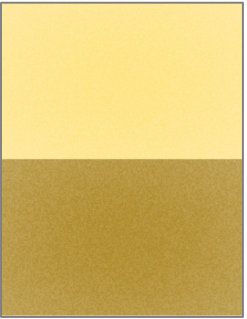




## summer glow – featured golden effect pigments



**Cloisonné® Gold 222C**

COSMOS APPROVED  
natural mica based gold  
effect pigment for a clean  
golden base color



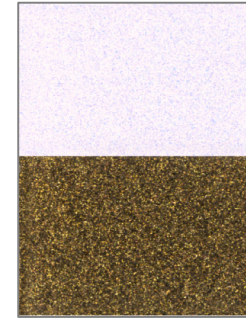
**Cloisonné® Monarch  
Gold 233X**

Natural mica based  
effect pigment with a  
warm and reddish golden  
undertone



**Cloisonné® Sparkle  
Gold 222J**

COSMOS APPROVED  
golden sparkle effect  
pigment



**Reflecks™ Dimensions  
Brilliant Gold GY80D**

Clean gold sparkle effect  
pigment based on calcium  
sodium borosilicate to add  
light catching effects

## summer glow – featured bronze effect pigments



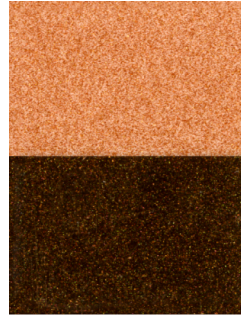
**Cloisonné® Golden  
Bronze 240X**

Bronze metallic-like  
effect pigment based  
on natural mica



**Cloisonné® Sparkle  
Bronze 250J**

Sparkling bronze  
metallic-like effect  
pigment based on natural  
mica



**Reflecks™ Dimensions  
Shiny Bronze G250D**

Bronze sparkle effect  
pigment based on calcium  
sodium borosilicate to add  
light catching effects



**Reflecks™ MultiDimensions  
Swirling Sweetberry G490D**

Metallic color travel pigment  
from bronze to rouge based  
on calcium sodium  
borosilicate

Images were rendered as Portable Network Graphics format and are based on TAC7-Scanner measurements. The H.264/MPEG-4 AVC codec was used for video compression.  
Color and quality are subject to computer and projector lighting.





Adorn your eyes with gold pigments to reflect summer's glow



Celebrate the glowing beauty of the summer and adorn your eyes with this golden pressed pigment pot eyeshadow.

With this simple yet innovative technology, there is no limit to creating unique shades.

This formulation delivers high payoff and stunning effects.



## Pressed Pigment Pot Eyeshadow - Gold

CC-FR-18-058-A13

Phase	Ingredients	INCI	% by weight	Function
A	Reflecks™ Dimensions Shiny Gold G232D	Calcium Sodium Borosilicate, Titanium Dioxide, Iron Oxides	31.26	Effect pigment
	Indopol H-300 ( <i>Ineos Oligomers</i> )	Polybutene	4.24	Film forming agent
	Lameform® TGI	Polyglyceryl-3 Diisostearate	5.89	Emollient
	Eutanol® G	Octyldodecanol	9.37	Emollient
	Covi-ox® T 70 C	Tocopherol	0.14	Antioxidant
B	Reflecks™ Dimensions Brilliant Gold GY80D	Calcium Sodium Borosilicate, Titanium Dioxide, Silica	15.85	Effect pigment
	Indopol H-300 ( <i>Ineos Oligomers</i> )	Polybutene	2.46	Film forming agent
	Lameform® TGI	Polyglyceryl-3 Diisostearate	3.43	Emollient
	Eutanol® G	Octyldodecanol	5.45	Emollient
	Covi-ox® T 70 C	Tocopherol	0.09	Antioxidant
C	Cloisonné® Sparkle Gold 222J	Mica, Titanium Dioxide, Iron Oxides	12.98	Effect pigment
	Indopol H-300 ( <i>Ineos Oligomers</i> )	Polybutene	1.90	Film forming agent
	Lameform® TGI	Polyglyceryl-3 Diisostearate	2.65	Emollient
	Eutanol® G	Octyldodecanol	4.22	Emollient
	Covi-ox® T 70 C	Tocopherol	0.07	Antioxidant

This unique formulation brings the feel of summer nights, with dramatic sparkle effects. The innovative film formers keep sparkles in place until you're ready to peel them off.



## Sparkling liner

CC-FR-20-057-C01

Phase	Ingredients	INCI	% by weight	Function
A	Water, demin.	Aqua	32.10	
	D-panthenol® USP	panthenol	0.40	Active ingredient
	Rheocare® XGN	Xanthan Gum	0.40	Rheology modifier
	Preservative		qs	Preservative
B	Luviset® Clear AT 3	VP/Methacrylamide/Vinyl Imidazole Copolymer	22.00	Film forming agent
C	Hispagel® 200 NS	Glycerin, Glyceryl Polyacrylate	4.50	Rheology modifier
	Water, demin.	Aqua	27.00	
D	Reflecks™ Blazing Bronze G270L	Caclium Sodium Borosilicate, Iron Oxides	5.00	Effect pigment
	Reflecks™ Gilded Gold G232L	Calcium Sodium Borosilicate, Titanium Dioxide, Iron Oxides	4.80	Effect pigment
	Cloisonné® Monarch Gold 233X	Mica, Titanium Dioxide, Iron Oxides	2.00	Effect pigment
	Cloisonné® Orange 363C	Mica, Titanium Dioxide, Iron Oxides	1.20	Effect pigment
	Cloisonné® Nu-Antique Gold 222CB	Mica, Titanium Dioxide, Iron Oxides	0.60	Effect pigment

Spray and play with the Powder Spray Eyeshadow in Sunset Gold. A versatile and vibrant gold for building coverage that goes with any look, from natural to dramatic. The ultra-smooth feel and long-lasting formula keeps you looking fresh and comfortable all day long.



## Powder Spray Eyeshadow - Sunset Gold

CC-FR-18-026-C17

Phase	Ingredients	INCI	% by weight	Function
A	Pearl-Glo® UVR PG1086	Bismuth Oxychloride	30.00	Skin feel modifier
	Covabead PMMA (Sensient Technologies Corporation)	Polymethylmethacrylate	6.00	
	KSP-300 (Shin Etsu Chemical)	Diphenyl Dimethicone/ Vinyl Diphenyl Dimethicone/ Silsesquioxane Crosspolymer	6.00	
	Potassium Sorbate	Potassium Sorbate	1.00	Preservative
B	Cloisonné® Monarch Gold 233X	Mica, Titanium Dioxide, Iron Oxides	47.00	Effect pigment
	Flamenco® Summit Gold Y30D	Mica, Titanium Dioxide	10.00	Effect pigment



Refresh yourself with summer inspired personal care products





Refresh yourself at the end of the day with this summer glow inspired shampoo full of gold and bronze sparkles.



## Gold Shampoo

CC-FR-20-042-C07

Phase	Ingredients	INCI	% by weight	Function
A	Water, demin.	Aqua	68.00	
	Preservative		qs	Preservative
B	Glycerin	Glycerin	3.00	Humectant
	Rheocare® XGN	Xanthan Gum	0.80	Rheology modifier
C	Plantacare® 2000 UP	Decyl Glucoside	13.00	Surfactant
	Plantapon® ACG 50	Sodium Cocoyl Glutamate	10.00	Surfactant
	Lamesoft® PO 65	Coco-Glucoside, Glyceryl Oleate	2.00	Conditioning agent
D	Reflecks™ Dimensions Shiny Gold G232D	Calcium Sodium Borosilicate, Titanium Dioxide, Iron Oxides	0.20	Effect pigment
	Reflecks™ Blazing Bronze G270L	Caclium Sodium Borosilicate, Iron Oxides	0.15	Effect pigment
	Reflecks™ Dimensions Sparkling Blackened Gold G250RD	Calcium Sodium Borosilicate, Iron Oxides	0.05	Effect pigment
E	Citric Acid (50% solution)	Citric Acid	2.80	pH Adjustment

# Procedure

## Pressed Pigment Pot Eyeshadow - Gold

CC-FR-18-058-A13

1. Prepare phase A, B and C by mixing gently all the ingredients
2. Mix all the 3 phases together
3. Put them in the final jar and pressed

## Sparkling liner

CC-FR-20-057-C01

1. Prepare phase A under agitation until complete homogen
2. Add phase B
3. Prepare phase C under agitation and add it to A+B
4. Add phase D

## Powder Spray Eyeshadow - Sunset Gold

CC-FR-18-026-C17

1. Homogenize phase A with a mixer 2 times (1 min each) at maximum speed.
2. Add phase B and homogenize 2 times (1 min each) at minimal speed.

## Gold Shampoo

CC-FR-20-042-C07

1. Prepare phase A and B separately.
2. Add phase B to A under stirring until have an homogeneous solution.
3. Prepare phase C and add it to A+B under gentle stirring (without vortex) to avoid air intake
4. Add phase D and adjust the pH with phase E.



# Disclaimer

While the descriptions, designs, data and information contained herein are presented in good faith and believed to be accurate, they are provided for guidance only. Because many factors may affect processing or application/use, BASF recommends that the reader make tests to determine the suitability of a product for a particular purpose prior to use. **NO WARRANTIES OF ANY KIND, EITHER EXPRESSED OR IMPLIED, INCLUDING, BUT NOT LIMITED TO, WARRANTIES OF MERCHANTABILITY OR FITNESS FOR A PARTICULAR PURPOSE, ARE MADE REGARDING PRODUCTS DESCRIBED OR DESIGNS, DATA OR INFORMATION SET FORTH, OR THAT THE PRODUCTS, DESCRIPTIONS, DESIGNS, DATA OR INFORMATION MAY BE USED WITHOUT INFRINGING THE INTELLECTUAL PROPERTY RIGHTS OF OTHERS.** In no case shall the descriptions, information, data or designs provided be considered a part of BASF's terms and conditions of sale. Further, the descriptions, designs, data, and information furnished by BASF hereunder are given gratis and BASF assumes no obligation or liability for the descriptions, designs, data or information given or results obtained all such being given and accepted at the reader's risk.

® *registered trademarks of BASF Group.*

© 2019 BASF Group